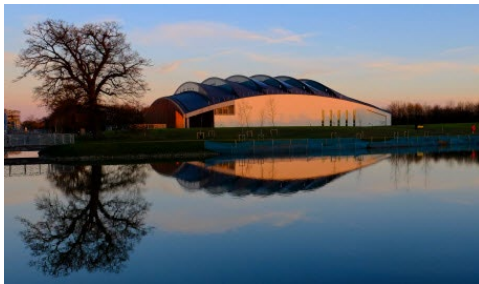


# Research Associate

Department of Medicine

CLOSING DATE: 4th December 2024

Job Reference: RC44059



# Research Associate

**Salary:**

£36,924 - £45,163 per annum

**Contract:**

Fixed Term

**Location:**

Cambridge Biomedical Campus

**Department:**

Medicine

**Responsible to:**

Dr Nicole Kaneider-Kaser  
(Clinical Research Career  
Development Fellow)

**Working Pattern:**

Full Time

**Purpose of the role**

Our laboratory in the Cambridge Institute of Therapeutic Immunology and Infectious Disease (CITIID) studies genetically-affected pathways that predispose for immune-related diseases. We look for a scientist with a background in electrophysiology, cell biology and biochemistry to join our group. Experience in animal studies including a home office license would be ideal as one part of this project will involve studying the role of a G-protein coupled receptor in Crohn's Disease in mouse models.

The main project will be focused on the biology of an orphan G-protein coupled receptor.

We hope to recruit a colleague who shares our passion for discovery and who looks for an exciting challenge within a multidisciplinary group.

The successful candidate will participate in group meetings and departmental seminars, and will have the opportunity to attend scientific conferences as appropriate.

Contribution to research will be as a member of the team carrying out research at a similar level to that undertaken by lecturing staff and will provide substantial scope for academic judgement, originality, interpretation and presentation of results. Contribution to teaching will include assistance in the presentation of seminars and may include participation in the research group's teaching.

**Key responsibilities**

Research and Scholarship – 90%

- Conception and design of own or joint research in consultation with PI
- Conduct individual and collaborative research projects
- Documentation and quality reassurance of experimental data, results, and methodology
- Continually use of scientific literature to update knowledge and understanding in the field
- Manage research project and associated administrative matters
- Work safely and contributing to laboratory safety

Teaching and learning support – 5%

- May assist in the supervision of student projects and teaching skills to students

Communication – 5%

- Presentation and discussion of data in internal meetings
- May plan and deliver seminars of research work
- Write up research work and prepare materials for presentation and publication
- Assist in the preparation of proposals/applications to external bodies such as funding agencies



# Person Specification

| Criteria  | Essential | Desirable |
|---|-----------|-----------|
| <b>Education</b>  |           |           |
| PhD in structural biology, immunology, cell biology, molecular biology, biochemistry or a broadly related field   | ✓         |           |
|   |           |           |
| <b>Academic</b>   |           |           |
| Strong background in cell biology and immunology  |           | ✓         |
| Broad experimental skill set, including immunology, cell biology, and molecular biology                           | ✓         |           |
|   |           |           |
| <b>Interpersonal &amp; communication Skills</b>   |           |           |
| Good communication and presentation skills  | ✓         |           |
| A track record of securing research funding   |           | ✓         |
| Willing to take a leading role in the supervision of Research Students  | ✓         |           |
| Strong team player with effective leadership skills to bring projects to fruition                                 | ✓         |           |
|   |           |           |
| <b>Relevant experience</b>  |           |           |
| Previous laboratory experience  | ✓         |           |
| A strong publication record   |           | ✓         |
| Experience in any or ideally all of the following areas is desirable: immunology, cell biology, molecular biology | ✓         |           |
| A personal Home Office License would be advantageous  |           | ✓         |
|   |           |           |
| <b>Leadership and achievements</b>  |           |           |
| Willingness to undertake management and administrative duties   |           | ✓         |
|   |           |           |
|   |           |           |

# Department of Medicine

## Vision

The Department of Medicine seeks to produce the highest quality research output while increasing the efficacy of translation, delivering a global impact upon clinical practice and patient wellbeing. We seek to enhance graduate education, and its interface with the NHS both at the research and clinical levels, while focusing on the success, wellbeing and diversity of its key resource, our staff and students.

## Research Priorities

Our strategic priorities are focused on four Departmental Sections. Cardiovascular and Respiratory Medicine (**CaRM**), Immunology and Infectious Disease (**ImID**), Perioperative, Acute, Critical Care and Emergency Medicine (**PACE**) and Specialty Medicine, Research and Training (**SMaRT**). Our **CaRM** and **ImID** priorities are delivered through the Victor Phillip Dahdaleh Heart & Lung Research Institute (**VPD-HLRI**) and the Cambridge Institute for Therapeutic Immunology and Infectious Disease (**CITIID**), while **PACE** is housed in Cambridge University Hospital. Our scientists can leverage access to patient samples, technologies and datasets, enabled by our strategic location on the biomedical campus.

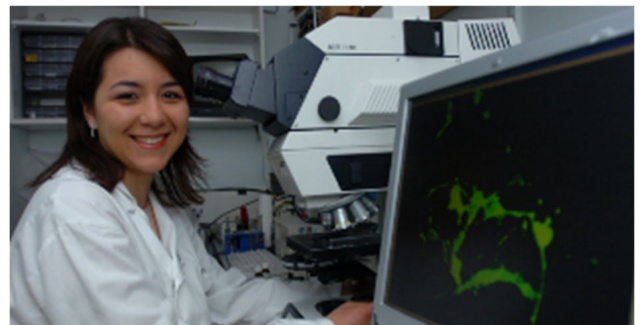
The **CaRM** Section works with other academic departments across the Clinical School and NHS to foster collaborative research between academic, clinical and commercial partners. **CaRM** successfully renewed its status as a BHF Centre for Research Excellence in 2024. In collaboration with the Cardiorespiratory BRC theme, **CaRM** supports the **VPD-HLRI**'s mission of improving cardiovascular and lung health across the world by working collaboratively across the university, NHS, commercial and charitable sectors.

**ImID** provides a critical role supporting **CITIID** in establishing itself as a leading international institute by delivering outstanding science which contributes to our understanding of immunemediated, and infectious diseases. A major focus of **ImID** is fostering global health research

through partnerships with institutions such as National University of Singapore - Cambridge Immune Phenotyping Centre, the Hong Kong Jockey Club Global Health Institute.

**PACE** makes substantial clinical and research contributions, with our clinical academics holding leading roles in national policy and clinical trials. Notably, **PACE** leads on the Lancet Neurology Commission on Traumatic Brain Injury and coordinating the International Initiative on Traumatic Brain Injury Research.

The primary role of **SMaRT** is to optimise links with the NHS through formal links with NHS Clinical Service Leads in both the Cambridge University & Royal Papworth Hospitals, the department can host promote clinical academic training and hosts many clinical academic trainees.



## Structure

With 550 staff and students, and a further 200 visitors, the Department of Medicine is the largest in the School of Clinical Medicine. We house over 80 Principal Investigators, 50% of whom are clinically active; and hold over 250 active grants worth **£150M** with an annual expenditure of **£30M**.

The Department sits at the forefront of medical research, delivering scientific success, demonstrable clinical impact, and actively contributing to the development of the BioMedical campus. We ensure interaction with industry is a major focus of our work, building on the longstanding presence of the GSK Cambridge Clinical Unit, the recent arrival of the Global Research and Corporate Headquarters of AstraZeneca and the growing presence of BioNTech.

# School of Clinical Medicine

**The School of Clinical Medicine currently employs nearly 3,000 people, spanning all varieties of staff type from Academic Professors to administrative support.**

In 1976 in response to the recommendation of the Royal Commission on Medical Education in the late 1960's, a complete medical course was re-established in Cambridge with the opening of the School of Clinical Medicine at the new Addenbrooke's Hospital site.

On 21st November 1980, HRH The Duke of Edinburgh, the Chancellor of the University of Cambridge, officially opened the Clinical School Building which presently accommodates the medical library, lecture theatres and seminar rooms.

The University of Cambridge School of Clinical Medicine aspires to change the practice of medicine and improve biological understanding in a wide range of clinical specialities and scientific disciplines. Collaborative research, both within biomedicine and crossing the boundaries to the mathematical, physical and social sciences, is key to our approach. The School also supports key enabling technologies and facilities in imaging, bioinformatics and biological systems. The main areas of research interest are:

- Cancer research
- Cardio-Respiratory Medicine
- Cellular mechanisms of disease
- Diabetes, Endocrinology and Metabolism
- Epidemiology, Public Health and Primary Care
- Genetics and Genetic Medicine
- Haematological and Transplantation Medicine
- Infection and Immunity
- Neurosciences and Mental Health
- Stems Cells and Regenerative Medicine.

**The School aims to provide leadership in education, discovery and healthcare. It will achieve this through; inspirational teaching and training, outstanding basic and clinical research and integration of these to improve medical practice for both individual patients and the population.**

## **The School will:**

Through inspirational teaching and training, educate individuals who:

- will become exceptional doctors or biomedical scientists
- combine a depth of scientific understanding with outstanding clinical and communication skills demonstrate a caring, compassionate and professional approach to patients and the public and
- are equipped to become future international leaders of their profession.

Through its commitment to the pursuit of excellence, support scientists of international standing in basic and clinical research aiming to:

- understand fundamental biology and thereby the mechanisms underlying disease integrate basic and clinical research
- apply a rigorous mechanism-based approach to clinical problems and
- innovate to solve the health challenges of our society.



Professor Patrick Maxwell, Regius Professor of Physic and Head of the School of Clinical Medicine

# Terms of Appointment

## Tenure and probation

The appointment will be made on a fixed-term basis for 12 months in the first instance, because your employment relies on the availability of finite funds for a specific purpose that are not part of the University's general revenues.

Appointments will be subject to satisfactory completion of a six-months probationary period.

## Hours of Work and Working Pattern

The hours of work for the position are Full time. Working Monday to Friday.

## Pension

You will automatically be enrolled to become a member of USS (Universities Superannuation Scheme) – a defined benefits pension scheme. For further information please visit: [www.pensions.admin.cam.ac.uk/](http://www.pensions.admin.cam.ac.uk/).

## Annual leave

Full time employees are entitled to annual paid leave of 41 days inclusive of public holidays. For new part-time employees, annual leave will be pro rata'd based on days worked.

## General information

### Pre-employment checks

### Right to work in the UK

We have a legal responsibility to ensure that you have the right to work in the UK before you can start working for us.

If you do not have the right to work in the UK already, any offer of employment we make to you will be conditional upon you gaining it.

### Health declaration:

Once an offer of employment has been made the successful candidate will be required to complete a work health declaration form.

### Qualifications:

The person specification for this position lists qualifications that are essential and/or desirable. Please note that if you are offered the post you will be asked to provide your relevant original certificates of these qualifications.

### References:

Offers of appointment will be subject to the receipt of satisfactory references.

### Screening Checks:

This role requires a basic disclosure and a security check. Any offer of employment we make to you will be conditional upon the satisfactory completion of these checks; whether an outcome is satisfactory will be determined by the University. The nature of this role means that the successful candidate will also need to undergo a health assessment.

## Information if you have a disability

The University welcomes applications from individuals with disabilities. We are committed to ensuring fair treatment throughout the recruitment process. We will make adjustments to enable applicants to compete to the best of their ability wherever it is reasonable to do so and, if successful, to assist them during their employment.

Information for disabled applicants is available at <http://www.admin.cam.ac.uk/offices/hr/staff/disabled/>

We encourage you to declare any disability that you may have, and any reasonable adjustments that you may require, in the section provided for this purpose in the application form. This will enable us to accommodate your needs throughout the process as required. However, applicants and employees may declare a disability at any time.

If you prefer to discuss any special arrangements connected with a disability, please contact, the Department Administrator, who is responsible for recruitment to this position. Alternatively, you may contact the Clinical School Recruitment Team who are responsible for recruitment to this position via:

[csrecruitment@medschl.cam.ac.uk](mailto:csrecruitment@medschl.cam.ac.uk)

# The University

**The University of Cambridge is one of the world's oldest and most successful universities. We are a renowned centre for research, education, and scholarship that makes a significant contribution to society. The University is consistently ranked amongst the top universities in the world. Our affiliates have won more Nobel Prizes than any other University.**

Our sustained pursuit of academic excellence is built on a long history of first-class teaching and research within a distinctive collegiate system. For eight centuries our ideas and innovations have shaped the world. Our principal goal is to remain one of the world's leading universities in an increasingly competitive global higher education sector. Today the University of Cambridge is at the centre of a cluster of over 4,300 businesses employing 58,000 people.

Our capital investment projects include the West Cambridge site, the North West Cambridge development and the growth of the Biomedical Campus in the south of the city. The North West Cambridge development and the growth of the Biomedical Campus in the south of the city. The North West Cambridge development includes the opening of a primary school – the first in the UK to be managed by a University. So we are deeply embedded in, and committed to serving, our local community. These are all conspicuous signs of a University that is not only adapting to new needs, but also anticipating the future.

Our mission is to contribute to society through the pursuit of education, learning, and research at the highest international levels of excellence. Our core values are:

- freedom of thought and expression; and
- freedom from discrimination.



# About Us

**The University is one of the world's leading academic centres. It comprises 150 faculties and departments, together with a central administration and other institutions. Our institutions, museums and collections are a world-class resource for researchers, students and members of the public representing one of the country's highest concentrations of internationally important collections.**

The University has an annual income of £2 billion. Research income, won competitively from the UK Research Councils, the European Union (EU), major charities and industry, exceeds £500 million per annum and continues to grow.

The Colleges and the University remain committed to admitting the best students regardless of their background and to investing considerable resources both in widening access and financial support. The 31 Colleges are self-governing, separate legal entities which appoint their own staff. Many academic staff are invited to join a College as a Teaching Fellow, which provides a further social and intellectual dimension. The Colleges admit students, provide student accommodation and deliver small group teaching.

The University awards degrees and its faculties and departments provide lectures and seminars for students and determine the syllabi for teaching and conducting research.

Our instinct for seeking out excellence and setting up enduring and mutually beneficial collaborations has led us to establish strategic partnerships across the globe. Whether it is the successful Cambridge-Africa Programme involving universities in Ghana, Uganda and elsewhere on the African continent; or the close association with the government of India to pursue new research in crop science; or the creation, with Germany's Max Planck Institutes, of a Cambridge-based centre for the study of ethics, human economy and social change – international partnerships are now an inextricable part of the University's make-up.

“Through its outstanding education, research and innovation, the University of Cambridge has made – and continues to make – a lasting contribution to human knowledge and is flourishing. By working at the University of Cambridge, you will be joining a vibrant community of students, scholars and professional services staff committed to supporting and enhancing the University's mission to contribute to society.”

**Prof Deborah Prentice,  
Vice Chancellor 2023**





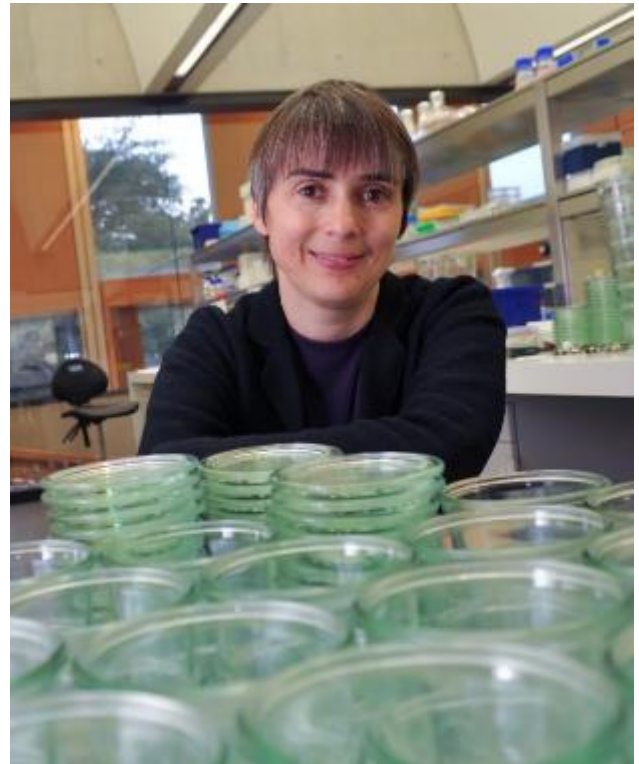
# Working at the University

**Working at Cambridge you will join a diverse, talented and innovative community, with more than 18,000 students and over 16,000 staff from all walks of life and corners of the world.**

The University continually explores strategies to attract and retain the best people. It is committed to supporting its staff to achieve their best. We are a fair, diverse and inclusive society and we believe our staff are our greatest asset. There is strong commitment to developing institutional leadership and supporting and encouraging staff development at all levels.

We offer a variety of roles including academic, research, professional, managerial and support roles. We also offer extensive benefits and excellent learning opportunities within a stimulating working environment.

The University's estate is undergoing the most significant transformation in its history. Cambridge has been able to create a new science and technology campus to the west of the city centre, and is now expanding further to the north west of Cambridge including investing in affordable homes for University key workers and community facilities. Even with our continued development, the University remains within walking or cycling distance across the campus. The University is a major partner on the Cambridge Biomedical Campus and we continue to redevelop our historic city centre sites demonstrating our determination to ensure that we can offer the best facilities and opportunities for our staff and students



## Equality & diversity

The University has built its excellence on the diversity of its staff and student community. We aim to be a leader in fostering equality and inclusion, and in promoting respect and a sense of belonging for all. We encourage applications from all sections of society. All appointments are made on the basis of merit. We have an Equal Opportunities Policy, along with a range of diversity networks for women, black and minority ethnic and lesbian, gay, bisexual and transgender staff. More details are available here: <http://www.equality.admin.cam.ac.uk/>

The University has a bronze Race Equality Charter award, with framework for improving the representation, progression and success of minority ethnic staff and students within higher education. Furthermore, the University's Athena SWAN award recognises and celebrates good practice in recruiting, retaining and promoting women.

# Living in Cambridge

**Cambridge is rich in cultural diversity. From beautiful University and College buildings, museums and art galleries, quaint gardens and punts on the River Cam, to a vibrant restaurant and café scene, our employees are surrounded by the wonderful features of this unique city.**

You can find a wide-range of high street shops and 3 shopping centres, with independent alternatives at the historic market and nestled within the passageways in the city centre. You will find a cinema, bowling alley, a nightclub and various live performances At the Cambridge Leisure Park, with further entertainment options at the Corn Exchange, Arts Theatre and the ADC Theatre. Further information can be found on the [Visit Cambridge](#) website.

If you prefer the faster pace of life, London is a 45 minute train journey away. For those travelling from overseas, Stansted Airport is just 45 minutes away and Heathrow Airport under 2 hours away. The University is a short distance from a host of other attractions such as Ely Cathedral, Newmarket Races and various wildlife parks and stately homes. Cambridge is also within easy reach of the beautiful Broads and coastlines of Norfolk and Suffolk.

## Relocation Support

The University recognises the importance of helping individuals to move and settle into a new area. We provide support and guidance to those relocating internationally or domestically to take up a post at the University of Cambridge, liaising with other University offices and selected partners to ensure comprehensive relocation support is available. This includes: accommodation, childcare, schools, banking, immigration and transport. If you would like further information, please visit <https://www.accommodation.cam.ac.uk/>. The Shared Equity Scheme and the Reimbursement of Relocation Expenses Scheme provide financial assistance to qualifying new members of staff with the costs of relocating to Cambridge.

## Accommodation Service

The University Accommodation Service helps staff, students and visiting scholars who are affiliated to the University in their search for suitable accommodation in Cambridge. The dedicated accommodation team can provide access to a wide range of University-owned furnished and unfurnished properties, and has a database of private sector accommodation available for short and long-term lets. For further information and to register with this free service please visit <https://www.accommodation.cam.ac.uk/>



# What Cambridge can offer

**We offer a comprehensive reward package to attract, motivate and retain high performing staff at all levels and in all areas of work.**

The University offers a wide range of competitive benefits, from family leave entitlement, to shopping and travel discount schemes. Our generous annual leave package contributes to the positive wellbeing of our University employees. Sabbatical leave enables academics to focus on research and scholarship, whilst still maintaining their full salary. The University also has a [career break scheme for academic and academic-related staff](#), with additional flexible working policies for all other staff.

## Pay and benefits

The University salary structure includes automatic service-related pay progression in many of its grades and an annual cost of living increase. In addition to this, employees are rewarded for outstanding contribution through a number of regular pay progression schemes. The University offers attractive pensions schemes for employees, with an additional benefit of a salary exchange arrangement providing tax and national insurance savings. Payroll giving is also a simple, tax-efficient way for employees to make monthly donations to charity.



## CAMBens employee benefits

We offer a CAMBens scheme for University employees, providing access to online and in-store shopping discounts and cashback. With more than 2,000 participating retailers, employees can save money on a wide range of household expenses, from groceries and clothes, to holidays and insurance and much more. A range of local discounts are also available, helping employees to save money whilst also supporting local Cambridge businesses and a CAMBens Cycle to Work salary sacrifice scheme is also available, which enables employees to save money on transport costs. A 10% discount rate on the [purchase of train season tickets, bulk buy tickets](#) and an interest free travel to work loan are also available for staff of the University.



# Clinical School Benefits

## Cambridge Biomedical Campus

Being based on Cambridge Biomedical Campus gives the University of Cambridge School of Clinical Medicine employees an unrivalled range of on-site amenities.

### These include:

#### Core amenities

- Marks & Spencer Simply Food
- Clothes & Gift shops
- The Body Shop
- Newsagent
- Barclays Bank
- Hairdressers
- Dry Cleaners
- Costa Coffee/Starbucks
- Various food outlets

#### Sports and Leisure

The Frank Lee Sports and Leisure Centre on the Campus is open to everyone who works on the Campus including employees of companies. The Centre offers a comprehensive range of activities for both adults and children (during the school holidays). Facilities include a 25m heated indoor pool, tennis and squash courts, cardio gym and fitness rooms. There is also a licensed bar, restaurant and function rooms.

#### Childcare

Bright Horizons Long Road nursery is located on the Campus making it an ideal location for parents who work at the site. The nursery is purpose built and houses five home bases, each designed specifically for babies, toddlers and pre-school children, as well as a spacious and secure external area in which children can play and explore the outdoors.

#### Apprenticeship opportunities

These are available for new and current members of staff to earn while they learn. The University is committed to nurturing talent and developing expertise through providing relevant vocational and professional apprenticeships across all of its departments and institutions.



## Clinical School Wellbeing Programme

Following the launch of the Clinical School Wellbeing Programme in April 2014 it has continued to develop and grow each year. The School holds regular wellbeing talks and events in addition to hosting two dedicated Wellbeing Weeks packed with activities for staff each year. Activities include staff massages, smoothie bikes, step challenges, arts and crafts sessions and many more.

The School also has a team of mental health first aiders recruited and trained from our own pool of staff. The School is always looking for new ways to engage staff and encourage them to look after their physical and mental wellbeing.



## Equality, Diversity and Inclusion

The School of Clinical Medicine has a dedicated governance group overseeing equality, diversity and inclusion related activities. Regular talks are held throughout the year and all staff members are expected to undertake Equality and Diversity training.

The School has a number of networks for different staff groups encouraging communication and sharing of practices. There is also a growing network of 100+ Equality Champions who meet termly and help raise awareness of equality, diversity and inclusion within their departments. The School currently holds a silver Athena SWAN award utilising the process to critically analyse all areas of equality and diversity within the school.

# How to apply

Applications should be submitted online via the University of Cambridge jobs page [www.jobs.cam.ac.uk](http://www.jobs.cam.ac.uk) by clicking “Apply online” in the job advert. You will need an email address to register for our online system.

Informal enquiries are welcomed and should be directed to:

Dr Nicole Kaneider

Email: [nk428@cam.ac.uk](mailto:nk428@cam.ac.uk)

If you have any queries regarding the application process please contact [csrecruitment@medschl.admin.cam.ac.uk](mailto:csrecruitment@medschl.admin.cam.ac.uk)