

# Mellon Postdoctoral Fellow in American History

Faculty of History

Closing date 9 March 2025

Job Reference: JJ45113



## Mellon Postdoctoral Fellow in American History

**Salary:**

£32, 296-£34,886 – Grade 5  
£36,924 - £45, 163 – Grade 7

**Contract:**

Fixed Term

**Location:**

Cambridge

**Faculty / Department:**

History

**Responsible to:**

Mellon Professor – Professor  
Mia Bay

**Working Pattern:**

Full Time



The Mellon Postdoctoral Fellow is a three-year postdoctoral fellowship in American history. We are seeking a historian of the twentieth century. Successful candidates who have not been awarded their PhD by the appointment date will be appointed as a Research Assistant at Grade 5. Upon award of the PhD the individual will be promoted to Research Associate, Grade 7.

Candidates for this post will be expected to demonstrate that they have undertaken research that is original and innovative and that will, when published, make a substantial contribution to American history. They will also be expected to demonstrate an interest in contributing to the promotion of American history at Cambridge. The post is open to applicants working on twentieth-century U.S. history.

Past Mellon Research Fellows have an excellent track record of securing academic positions; they now hold posts UK, US, Canadian, and Australian universities.

**Key responsibilities**

The Mellon Postdoctoral Fellow will be expected to pursue their own research across the full period of the fellowship. The postholder will also be expected to convene the American History Workshop, a weekly seminar in which PhD students present dissertation chapters and

advance their professional development.

The Fellow will be expected to become a regular participant in and contributor to the Cambridge American History Seminar and to make a presentation to the seminar at some point during his/her tenure. Some teaching duties may be included at both the MPhil and undergraduate level.

## American History in Cambridge

**The Mellon Postdoctoral Fellow will join a thriving American History programme at Cambridge.** The Faculty offers a doctoral programme in American History with around twenty PhD students enrolled at any given time. Since 2015, the Faculty has also offered a one-year MPhil programme in American history that attracts students from the UK, US, and around the world. Undergraduate demand for courses in American history is high, and many students choose to write their final-year dissertations on American history. Currently the Faculty is integrating United States history into a more regional and hemispheric approach in its core first-year, team-taught course.

Cambridge is one of the leading centres for American history outside of the United States, with seven permanent faculty members and around four postdoctoral fellows at any given time. Members of the American history Subject Group have recently won major book, article, and digital history prizes.

American history benefits from the visiting Pitt Professorship in American History and Institutions. This chair is held by a historian in alternate years. The incoming Pitt Professor is Beth Bailey. Prior Pitt Professors include Erika Lee, Kathleen Brown, Heather Thompson, Ira Katznelson, Margaret Jacobs, and David Blight.

## Activities

A seminar for faculty and graduate students meets twenty times a year. Guests to the seminar, drawn from both inside and outside the UK, share work in progress. A separate American History Workshop for PhD students meets weekly and is convened by the Mellon Postdoctoral Fellow.

The Mellon Fund supports a variety of conferences, including, most recently, 'Writing American History in Uncertain Times', organised by Nick Guyatt in May 2023. Other past conferences have included explorations of the global history of democracy in the modern era, marriage's global past, civil rights, the New Deal, transnational influences on American history, political culture in the Early Republic, Indigenous and borderlands history, and southern women's history.

# Person Specification

Criteria	Essential	Desirable
<b>Education</b>		
Educated to degree level, applicants must have or be close to obtaining a PhD in a relevant specialist subject area	✓	
<b>Skills and Experience</b>		
The role holder would possess some research experience with sufficient breadth/depth of specialist knowledge in the discipline and of research methods and techniques to work within established research programmes.	✓	
Will continually update knowledge in the specialist area and engage in continuous professional development	✓	
An interdisciplinary and collaborative research approach		✓
Evidence of the ability to publish high quality research	✓	
Ability and willingness to work collaboratively	✓	
Ability to communicate research effectively to both public and scholarly audiences		✓

# The Faculty of History



The History Faculty's 100 academic staff (teaching officers employed by either the University or the Colleges) constitute one of the largest and best history departments in the world. Times Higher Education ranked Cambridge History third in the world and first in the UK in the TES World University Rankings 2021 - a measure of both quality and depth. The faculty was ranked first in subject in the Guardian 2020 guide and the Complete University Guide 2021. In the 2021 Research Excellence Framework (REF) the faculty submitted the work of 135 historians. In terms of 'research power' (GPA x FTE), it ranked second in the sector. 46% of the faculty's research was judged 4\* ('world leading') and 34% as 3\* ('internationally excellent'). Some 600 undergraduates study a single Honours degree in History or joint Honours degrees in either History & Politics or History & Modern Languages.

In October 2022, the Faculty launched a new first and second year undergraduate The Faculty of History programme (Parts Ia and Ib of the History Tripos), which

represents a significant modernisation of our curriculum and an opportunity to innovate and diversify in terms of content.

Over 100 MPhil students each year take one of the Faculty's eight MPhil programmes, and there are around 300 PhD students.

James Stirling's History Faculty Building (1968) is 'listed' as architecturally significant; the Seeley Library has over 70,000 volumes. The Faculty has more than thirty specialist research seminars.

The Faculty is divided into eight Subject Groups: American; Ancient and Medieval; Economic and Social; Early Modern; Modern British and Irish; Modern European; Political Thought and Intellectual History; and World. All staff members belong to one or more Subject Groups.



# The School of Humanities and Social Sciences

The School of Humanities and Social Sciences is, in terms of student numbers, the largest of the six Schools in the University and is currently comprised of:

- ✚ Faculty of History
- ✚ Faculty of Economics
- ✚ Faculty of Education
- ✚ Faculty of Law
- ✚ Faculty of Human, Social and Political Science, which is made up of:
  - Department of Archaeology including the McDonald Institute or Archaeological Research
  - Department of Social Anthropology including the Museum of Archaeology and Anthropology and the Mongolian and Inner Asia Studies Unit –
  - Department of Sociology
  - Department of Politics and International Studies, incorporating:
    - Centre of African Studies
    - Centre of Development Studies
    - Centre of Latin American Studies
    - Centre of South Asian Studies
    - Centre for Gender Studies
- ✚ Faculty of Law, including the Institute of Criminology and the Lauterpacht Centre for International Law ·
- ✚ Department of History and Philosophy of Science, including the Whipple Museum of the History of Science
- ✚ Department of Land Economy



highly quantitative analysis of ‘big data’ to ethnography and the analysis of the material culture and thought of past societies. The geographical range is equally broad, with Centres of African, Latin American and South Asian Studies, and specialists within each Department or Faculty. Each institution has its own well developed research profile. The School is participating in university-wide Strategic Research Initiatives such as public health, global food security, energy and conservation which bring the insights of social sciences to bear on some of the major issues facing the world today; Cambridge is one of the world’s leading centres for science, technology and medicine, and the social sciences are now playing an increasingly important role in understanding the social, political and economic contexts.

The School covers a wide range of disciplines with differing methodologies, from

# Terms of Appointment

## Tenure and probation

Appointment will be made on a fixed-term basis.

Appointments will be subject to satisfactory completion of a probationary period which will be set dependent on the length of tenure.

## Hours of Work and Working Pattern

The appointment is full-time working Monday—Friday.

## Pension

You will automatically be enrolled to become a member of USS (Universities Superannuation Scheme) – a hybrid pension scheme. If you are already a member of the NHS Pension scheme, you may be eligible to continue in the scheme and should contact the Pensions section of the University. For further information please visit: [www.pensions.admin.cam.ac.uk/](http://www.pensions.admin.cam.ac.uk/)

## Annual leave

Full-time employees are entitled to annual paid leave of 41 days inclusive of public holidays. For new part-time employees, annual leave will be pro rata'd based on days worked.

## General information

### Pre-employment checks

### Right to work in the UK

We have a legal responsibility to ensure that you have the right to work in the UK before you can start working for us.

If you do not have the right to work in the UK already, any offer of employment we make to you will be conditional upon you gaining it.

**Health declaration** Once an offer of employment has been made the successful candidate will be required to complete a work health declaration form.

### Qualifications

The person specification for this position lists qualifications that are essential and/or desirable. Please note that if you are offered the post you will be asked to provide your relevant original certificates of these qualifications.

**References** - offers of appointment will be subject to the receipt of satisfactory references.

**Equality and Diversity** - We particularly encourage women and /or candidates from a Black, Asian and Minority Ethnic background to apply for this vacancy as they are currently under-represented at this level within our University.

## Information if you have a disability

The University welcomes applications from individuals with disabilities. We are committed to ensuring fair treatment throughout the recruitment process. We will make adjustments to enable applicants to compete to the best of their ability wherever it is reasonable to do so and, if successful, to assist them during their employment.

Information for disabled applicants is available at <http://www.admin.cam.ac.uk/offices/hr/staff/disabled/>

We encourage you to declare any disability that you may have, and any reasonable adjustments that you may require, in the section provided for this purpose in the application form. This will enable us to accommodate your needs throughout the process as required. However, applicants and employees may declare a disability at any time.

If you prefer to discuss any special arrangements connected with a disability, please contact, the Department Administrator, who is responsible for recruitment to this position on [hr@hist.cam.ac.uk](mailto:hr@hist.cam.ac.uk)

# The University

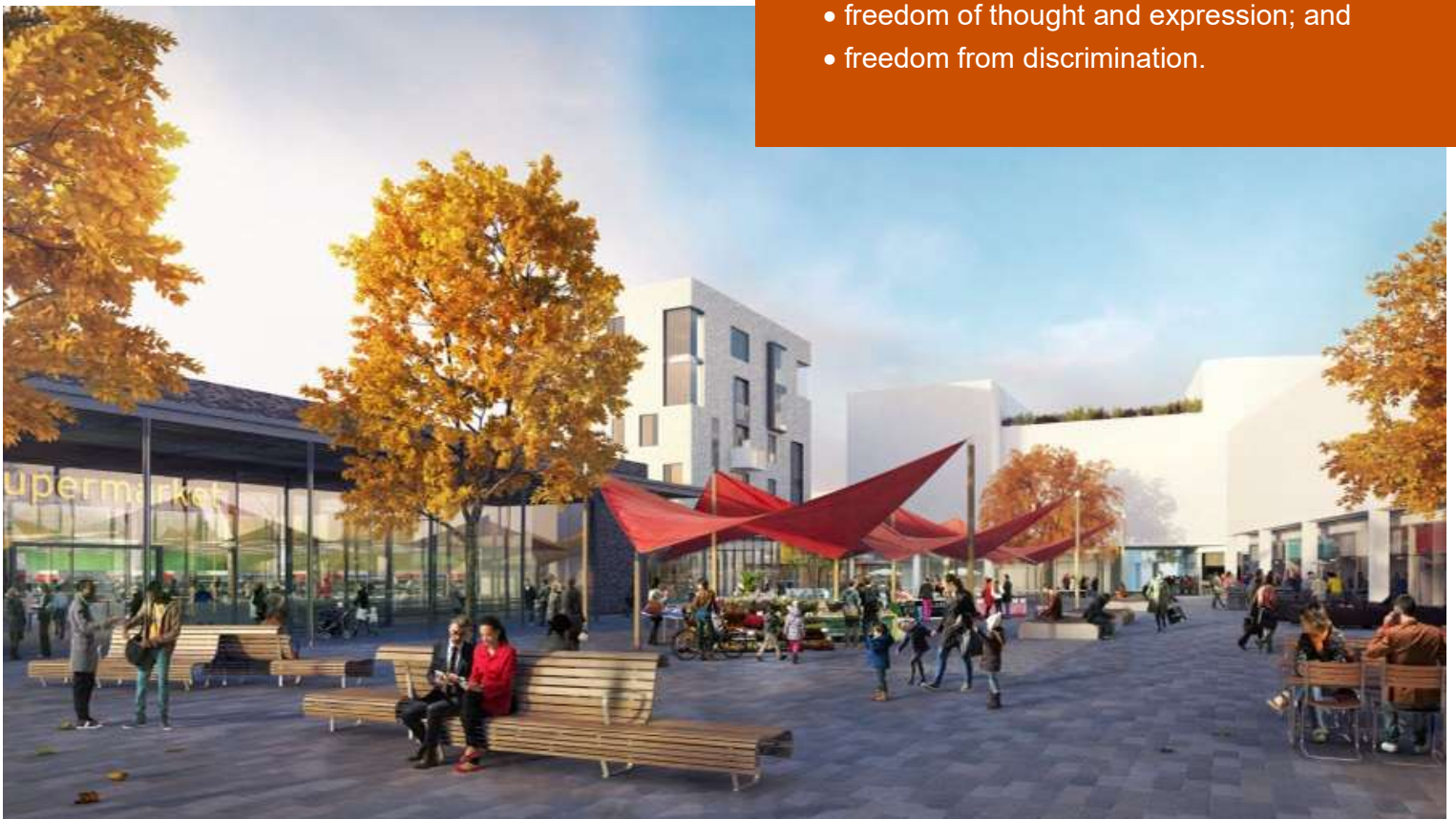
**The University of Cambridge is one of the world's oldest and most successful universities. We are a renowned centre for research, education, and scholarship that makes a significant contribution to society. The University is consistently ranked amongst the top universities in the world. Our affiliates have won more Nobel Prizes than any other University.**

Our sustained pursuit of academic excellence is built on a long history of world-leading teaching and research within a distinctive collegiate system. For eight centuries our ideas and innovations have shaped the world. Our principal goal is to remain one of the world's leading universities in an increasingly competitive global higher education sector. Today the University of Cambridge is at the centre of a cluster of over 4,300 businesses employing 58,000 people.

Our capital investment projects include academic and commercial growth at both the West Cambridge Innovation District, and the Biomedical Campus in the south of the city. Eddington, in North West Cambridge, is a mixed-use development including key worker housing for staff, a community centre and a new primary school, managed by the University. Through these projects, the University is deeply embedded in, and committed to serving, our local community. These are all conspicuous signs of a University that is not only adapting to new needs, but also anticipating the future.

Our mission is to contribute to society through the pursuit of education, learning, and research at the highest international levels of excellence. Our core values are:

- freedom of thought and expression; and
- freedom from discrimination.





## About Us

**The University is one of the world's leading academic centres. It comprises 150 faculties and departments, together with a central administration and other institutions. Our institutions, museums and collections are a world-class resource for researchers, students and members of the public representing one of the country's highest concentrations of internationally important collections.**

The University has an annual income of £2 billion. Research income, won competitively from the UK Research Councils, the European Union (EU), major charities and industry, exceeds £500 million per annum and continues to grow.

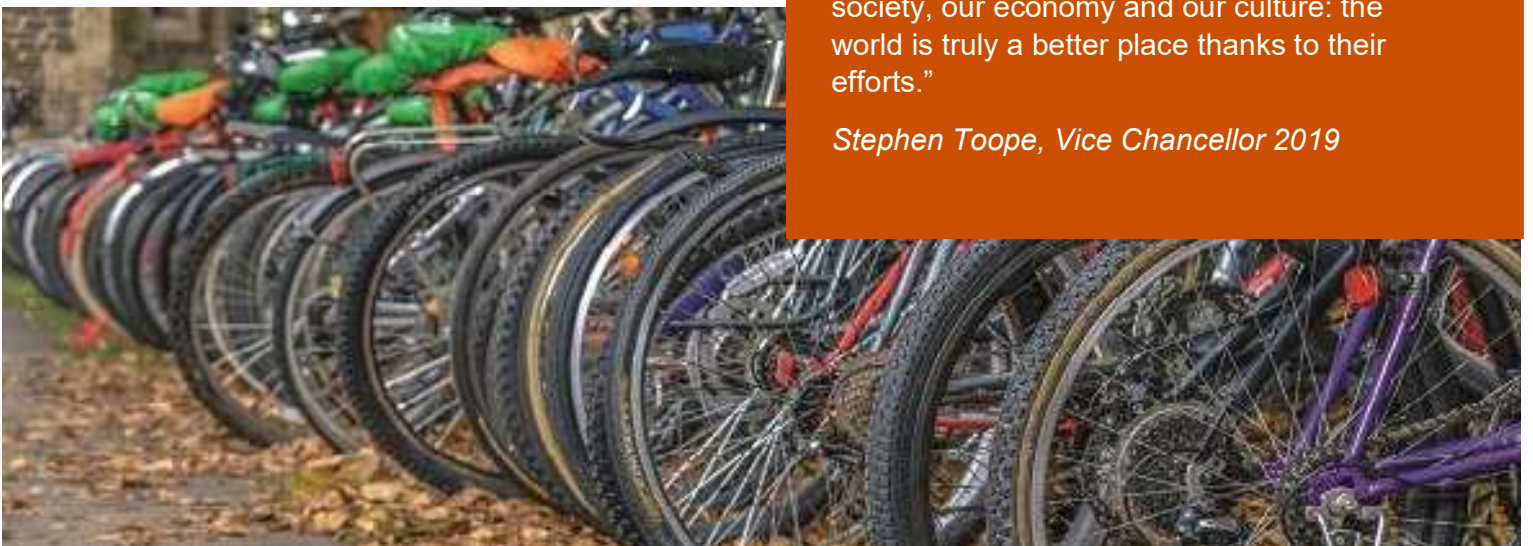
The Colleges and the University remain committed to admitting the best students regardless of their background and to investing considerable resources both in widening access and financial support. The 31 Colleges are self-governing, separate legal entities which appoint their own staff. Many academic staff are invited to join a College as a Teaching Fellow, which provides a further social and intellectual dimension. The Colleges admit undergraduate students, provide student accommodation and pastoral support and deliver small group teaching for undergraduates.

The University awards degrees and its faculties and departments provide lectures and seminars for students and determine the syllabi for teaching.

Our instinct for seeking out excellence and setting up enduring and mutually beneficial collaborations has led us to establish strategic partnerships across the globe. Whether it is the successful Cambridge-Africa Programme involving universities in Ghana, Uganda and elsewhere on the African continent; or the close association with the government of India to pursue new research in crop science; or the creation, with Germany's Max Planck Institutes, of a Cambridge-based centre for the study of ethics, human economy and social change – international partnerships are now an inextricable part of the University's make-up.

“Cambridge graduates and researchers have made – and continue to make – a colossal contribution to human knowledge and the understanding of the world around us. Their work touches on the lives and livelihoods of everyone from patients diagnosed with life-threatening diseases, to residents of areas critically affected by climate change, to children growing up in conflict zones. It has a lasting impact on our society, our economy and our culture: the world is truly a better place thanks to their efforts.”

*Stephen Toope, Vice Chancellor 2019*



# Working at the University

**Working at Cambridge you will join a diverse, talented and innovative community, with more than 23,000 students and over 16,000 staff from all walks of life and corners of the world.**

The University continually explores strategies to attract and retain the best people. It is committed to supporting its staff to achieve their best. We are a fair, diverse and inclusive society and we believe our staff are our greatest asset. There is strong commitment to developing institutional leadership and supporting and encouraging staff development at all levels.

We offer a variety of roles including academic, research, professional, managerial and support roles. We also offer extensive benefits and excellent learning opportunities within a stimulating working environment.

The University's estate is undergoing the most significant transformation in its history. Cambridge has been able to create a science and technology campus to the west of the city centre, and is expanding further to the north west of Cambridge including investing in affordable homes for University key workers and community facilities. Even with our continued development, the University remains within walking or cycling distance across the campus. The University is a major partner on the Cambridge Biomedical Campus and we continue to redevelop our historic city centre sites demonstrating our determination to ensure that we can offer the best facilities and opportunities for our staff and students.



## Equality & diversity

The University has built its excellence on the diversity of its staff and student community. We aim to be a leader in fostering equality and inclusion, and in promoting respect and a sense of belonging for all. We encourage applications from all sections of society. All appointments are made on the basis of merit. We have an Equal Opportunities Policy, along with a range of diversity groups, including the Women's Staff Network, Race Equality Network and LGBT+ Staff Network. More details are available here:

<http://www.equality.admin.cam.ac.uk/>

The University has a bronze Race Equality Charter award, with a framework for improving the representation, progression and success of minority ethnic staff and students within higher education. Furthermore, the University's silver Athena swan award recognises and celebrates good practice in recruiting, retaining and promoting gender equality.



# Living in Cambridge

**Cambridge is rich in cultural diversity. From beautiful University and College buildings, museums and art galleries, quaint gardens and punts on the River Cam, to a vibrant restaurant and café scene, our employees are surrounded by the wonderful features of this unique city.**

You can find a wide-range of high street shops and 3 shopping centres, with independent alternatives at the historic market and nestled within the passageways in the city centre. You will find a cinema, bowling alley, a nightclub and various live performances at the Cambridge Leisure Park, with further entertainment options at the Corn Exchange, Arts Theatre and the ADC Theatre. Further information can be found on the Visit Cambridge website.

If you prefer the faster pace of life, London is a 45 minute train journey away. For those travelling from overseas, Stansted Airport is just 45 minutes away and Heathrow Airport under 2 hours away. The University is a short distance from a host of other attractions such as Ely Cathedral, Newmarket Races and various wildlife parks and stately homes. Cambridge is also within easy reach of the beautiful Broads and coastlines of Norfolk and Suffolk.

## Relocation Support

The University recognises the importance of helping individuals to move and settle into a new area. We provide support and guidance to those relocating internationally or domestically to take up a post at the University of Cambridge, liaising with other University offices and selected partners to ensure comprehensive relocation support is available. This includes: accommodation, childcare, schools, banking, immigration and transport. If you would like further information, please visit <https://www.accommodation.cam.ac.uk/RelocationService/>. The Shared Equity Scheme and the Reimbursement of Relocation Expenses Scheme provide financial assistance to qualifying new members of staff with the costs of relocating to Cambridge.

## Accommodation Service

The University Accommodation Service helps staff, students and visiting scholars who are affiliated to the University in their search for suitable accommodation in Cambridge. The dedicated accommodation team can provide access to a wide range of University-owned furnished and unfurnished properties, and has a database of private sector accommodation available for short and long-term lets. For further information and to register with this free service please visit <https://www.accommodation.cam.ac.uk/>



# What Cambridge can offer

**We offer a comprehensive reward package to attract, motivate and retain high performing staff at all levels and in all areas of work.**

The University offers a wide range of competitive benefits, from family leave entitlement, to shopping and travel discount schemes. Our generous annual leave package contributes to the positive wellbeing of our University employees. Sabbatical leave enables academics to focus on research and scholarship, whilst still maintaining their full salary. The University also has a [career break scheme](#) for academic and academic-related staff, with additional flexible working policies for all other staff.

## Pay and benefits

The University salary structure includes automatic service-related pay progression in many of its grades and an annual cost of living increase. In addition to this, employees are rewarded for outstanding contribution through a number of regular pay progression schemes. The University offers attractive pensions schemes for employees, with an additional benefit of a salary exchange arrangement providing tax and national insurance savings.



## CAMbens employee benefits

The University offers employees a wide range of competitive benefits, known as CAMbens. CAMbens offers something for everyone across a range of categories, including:

- Financial Benefits, including shopping discounts (both local and national) and a Payroll Giving scheme;
- Relocation and Accommodation Benefits, including relocation assistance and interest-free Rental Deposit Loans;
- Travel Benefits, including Cycle to Work, discounts on train season tickets and interest-free Travel to Work loans;
- Family Friendly and Lifestyle Benefits, including support with childcare and family friendly policies;
- Health and Wellbeing Benefits, including a University Staff Counselling Service, discounts at the University Sports Centre, and other local gyms, and healthcare schemes.





# What Cambridge can offer

## Family-friendly policies

The University recognises the importance of supporting its staff. We have a range of family-friendly policies to aid employees' work-life balance including a generous maternity, adoption and shared parental leave entitlement of 18 weeks full pay, and paid emergency leave for parents and carers.

Other family-friendly support includes:

Our highly regarded workplace nurseries, a childcare salary exchange scheme and a high quality holiday Playscheme may be available to help support University employees with caring responsibilities (subject to demand and qualifying criteria). Further childcare information can be found here:

<https://www.childcare.admin.cam.ac.uk/>

The Newcomers and Visiting Scholars Group is an organisation within the University run by volunteers whose aim is to help newly arrived wives, husbands, partners and families of Visiting Scholars and members of the University to settle in Cambridge and give them an opportunity to meet local people. The Postdoc Academy supports the postdoctoral community within Cambridge. Further details are available here: <https://www.postdocacademy.cam.ac.uk/>

## Your wellbeing

The University's Sport Centre, Counselling Services and Occupational Health are just some of the support services available to University employees to promote their physical and mental wellbeing. The University delivers The Festival of Wellbeing annually, which is a programme of stimulating talks and activities, which aim to promote wellbeing and good mental and physical health. The University also hosts the [Cambridge Festival](#), which is a great opportunity to get your first taste of public engagement, through volunteering, supporting hands-on activities or proposing a talk.

## Development opportunities

We support new employees to settle in through various activities as well as supporting their professional and career development on an ongoing basis. Our Personal and Professional Development (PPD) team provide development opportunities for all University employees, including face-to-face sessions, online learning modules and webinars. All employees also have unlimited access to LinkedIn Learning to support their development. Both new and existing employees can undertake funded Apprenticeships, which lead to a range of vocational and professional qualifications. We offer reduced staff fees for University of Cambridge graduate courses and the opportunity to attend lectures and seminars held by University departments and institutions. A range of University training providers also offer specialist learning and development in their own areas e.g. teaching and learning, digital literacy, finance, health and wellbeing, safety.



# How to apply

Applications should be submitted online via the University of Cambridge jobs page [www.jobs.cam.ac.uk](http://www.jobs.cam.ac.uk) by clicking “Apply online” in the job advert. You will need an email address to register for our online system.

Applications should include a cover letter, a two-page statement of proposed research, a curriculum vitae and a sample of written work of approximately 10,000 words (such as a journal article or section of a book or dissertation) as well as details of two referees who have knowledge of the candidate's work. Referees will only be contacted at the longlisting phase of the search.

If you have any queries regarding the application process please contact [hr@hist.cam.ac.uk](mailto:hr@hist.cam.ac.uk)

Informal enquiries regarding the position may also be made to **Professor Mia Bay** at [mb2739@cam.ac.uk](mailto:mb2739@cam.ac.uk).

The closing date for applications is: **Sunday 9 March 2025**

Interviews will take place in late March.



UNIVERSITY OF  
CAMBRIDGE