

NIHR Clinical Lecturer in Medical Microbiology

Department of Medicine

CLOSING DATE: Monday 14 April 2025
Job Reference: RA45396



NIHR Clinical Lecturer in Medical Microbiology

Salary:

£44,159pa - £76,280pa

Contract:

Fixed Term - 4 years or to CCT

Location:

Cambridge

Department:

Department of Medicine

Responsible to:

Dr Mark Wills, Deputy Head of Department of Medicine

Working Pattern:

Full Time

Overview of the role

The Appointments Committee for Clinical Lecturer in the School of Clinical Medicine invite applications for a post in Medical Microbiology, in the Department of Medicine, to take up the appointment as soon as convenient. Applicants should have had suitable experience and training in Medical Microbiology. They should be of the standing required for an Honorary Contract of Service with the NHS East of England as a Specialist Registrar. The appointment will be for 4 years. The successful candidate will be recommended for an honorary clinical contract with the Cambridge University Hospitals NHS Foundation Trust.

The Clinical Lecturer will be required to undertake research, clinical work and training and also teaching duties as assigned by the Head of Department. The field of research will be determined by the successful applicant, in discussion with the Microbiology Academic Lead, Dr Theodore Gouliouris.

The Clinical Lectureship is aimed at doctors with a PhD/MD (or equivalent), who already have Combined Infection Training experience, have gained Membership of the Royal College of Physicians and show outstanding potential for continuing a career in academic medicine. It provides opportunities for post-higher degree research and facilitates applications for further research funding and postdoctoral academic training for doctors working towards completion of Combined Infection Training. Clinical Lecturers (CLs) spend 50% of their time undertaking specialist clinical training and 50% undertaking research. It is expected that CLs will complete their specialty training during the period of the Lectureship. The speciality training programme to be followed will be determined by the successful applicant in discussion with relevant members of the operational board of the Deanery Postgraduate School of Pathology.

Please note this post has been awarded with the research theme 'Clinical Therapeutics & Pharmacology & Industry'. The appointee will be expected to develop a research programme in that theme area.

Eligibility

The post is open to doctors who have completed a PhD/MD Fellowship (or equivalent) or an MB PhD programme, have gained the Membership of the Royal College of Physicians (or equivalent) and who meet the entry criteria for entry into higher specialty training. Applicants should as a minimum have completed Combined Infection Training competencies of the Medical Microbiology or Medical Microbiology / Infectious Diseases curriculum. The post is aimed at applicants who have already completed at least ST4.



Overview

The Cambridge UK Health Security Agency (UKHSA) Clinical Microbiology and Public Health Laboratory (CMPHL) functions as the diagnostic laboratory for Cambridge University Hospitals NHS Foundation Trust, and provides clinical Microbiology services to East & North Herts NHS Trust, Royal Papworth NHS Foundation Trust, and the surrounding GPs in collaboration with neighbouring Trusts in the East of England. The service provides clinical advice and consultation services for the diagnosis and management of community and nosocomial infections, and has close links with the Infectious Diseases unit. The service also provides varied Infection Control and antimicrobial and antifungal stewardship training opportunities and has been recognised as a commended Centre of Excellence by [GAMSAS](#). In addition, there are established partnerships for global health training.

The department has a strong track record in clinical microbiology training and the range and complexity of patients seen at Addenbrooke's Hospital provide excellent clinical training opportunities. More information on the Combined Infection Programme can be found at <https://heeoe.hee.nhs.uk/pathology/pathology-specialties/medical-microbiology-virology/training-programme-medical>.

There are currently 5 Specialist Registrars, two Academic Clinical Fellows and one Academic Clinical Lecturer; there are further clinical and academic trainees in Infectious Diseases and Virology; this provides the flexibility required for research-active trainees to undertake blocks of research training and experience. There are 10 WTE Consultant staff who are responsible for the educational and clinical supervision of trainees. The application of microbial whole-genome sequencing to diagnostic and public health microbiology is at the forefront of research in this speciality. Although this technology is becoming more widely disseminated, there are currently few clinical centres where training in its application can be gained. In addition, it is one of the centres piloting clinical metagenomics in respiratory diagnostics. The Trust has benefited from fully electronic records for over 10 years enabling large-scale clinical and epidemiological analyses.

Research

Cambridge has a strong track record in microbiology and infectious diseases research with a number of groups working on basic science and clinical studies.

Academic microbiology was established in Cambridge in 2009 with the appointment of Professor Sharon Peacock to the Chair of Clinical Microbiology. In 2019 Professor Ravi Gupta took up the Chair and leads a research program on viral evolution and biological characterisation of virus escape from therapeutics and vaccines, with a focus on HIV and SARS-CoV-2. He is also Faculty at the Wellcome Africa Health Institute in Durban.

In the Department of Medicine (<https://www.med.cam.ac.uk>), Dr Ewan Harrison's group uses genomics to understand the biology and evolution of upper respiratory tract microbiome and bacterial and viral pathogens. Professor John Sinclair's group studies how human cytomegalovirus (HCMV) persists in healthy individuals studying cellular factors which control virus latency and reactivation. Dr Mark Wills' group studies the control of HCMV infection by the immune system. Dr Nicholas Matheson's group studies viral and cellular regulation of immune metabolism. Dr Yorgo Modis's group aims gain a mechanistic understanding at the molecular level of how important pathogens interact with their host cells during infection. Professor Lalita Ramakrishnan's group works on the pathogenesis of *Mycobacterium tuberculosis* and has developed a zebrafish model to study immunity to these mycobacteria. Professor Paul Lehner's group uses functional genetic and proteomic technologies to study how viruses evade the human immune system. Professor Michael Weekes's group uses quantitative multiplexed proteomic approaches to characterise host restriction of intracellular pathogens.

There are additional research opportunities available at the Wellcome Sanger Institute (<http://www.sanger.ac.uk/programme/parasites-and-microbes>), and with Professor James Wood at the Department of Veterinary Medicine (<https://www.vet.cam.ac.uk>).

Additional research opportunities are available through the Cambridge Infectious Diseases Initiative (<http://www.infectiousdisease.cam.ac.uk/>), the Cambridge Africa Programme (<http://www.cambridge-africa.cam.ac.uk/>), the WHO Collaborating Centre for the modelling, evolution and control of emerging infectious diseases (<http://www.whocc.infectiousdisease.cam.ac.uk/>), and with Professor Daniela de Angelis at the MRC Biostatistics Unit (www.mrc-bsu.cam.ac.uk).

Clinical Speciality / Division

The research programme for this post will be located in the most appropriate academic environment to support the nature of the work. We wish to appoint academics whose interest in translational microbiology or clinical research would complement, or indeed add to, the existing areas of work already undertaken in Cambridge.

Training and Supervision

Clinical training is supervised by the Medical Microbiology and Virology Specialty Training Committee overseen by the East of England Deanery. Clinical training may be based in any of the approved training centres within the East of England deanery and specific clinical activities will depend on the candidate and their stage of training.

All trainees are allocated an educational supervisor for their training. Clinical lecturers will in addition have an academic supervisor. The deanery will carry out an Annual Review of each trainee's progress. The specific learning objectives set for each clinical placement will be appraised at this review. The candidate will be expected to maintain an E-portfolio of experience gained to support their learning objectives. In addition the clinical lecturer will keep an account of progress in research activity and undertake an annual academic appraisal which will form part of their overall annual review.

Contact information:

CATO Academic Programme Director

Prof Alasdair Coles (CATO Director)

Academic Training Lead:

Dr Theodore Gouliouris: theodore.gouliouris@nhs.net

Clinical Services Lead:

Dr Jenifer Mason: jenifer.mason2@nhs.net

Training Programme Director

Dr Michelle Toleman: england.microbiology.eoe@nhs.net

Person Specification

Criteria	Essential	Desirable
Education/ Eligibility		
Educated to degree level, normally with a PhD in the relevant specialist subject area	✓	
Completion of a PhD or MD in a relevant topic or discipline by the time of commencement of the post	✓	
GMC Registration, Licence to Practice and Medical Defence Cover	✓	
Hold MRCP and evidence of achievement of Core Medical Training (CMT) and Combined Infection Training competences from a UK affiliated Programme or equivalent in line with GMC standards/Good Medical Practice.	✓	
Academic		
A developing bibliography of research publications	✓	
Demonstrate a firm commitment to teaching at both the undergraduate and postgraduate levels	✓	
A track record of securing research funding		✓
Willing to take a leading role in the supervision of Research Students	✓	
An interdisciplinary and collaborative research approach	✓	
Leadership experience and achievements		
Willingness to undertake management and administrative duties	✓	
Proven ability to lead and inspire a team and work with vision and foresight		✓

Behavioural Attributes

This section summarises the behavioural attributes (or competencies) that we expect the role holder to be able to demonstrate, at what level and whether this is an essential or desirable requirement.

Full definitions are at: <https://www.hr.admin.cam.ac.uk/policies-procedures/behavioural-attributes>

Please review these and provide specific examples in your application of how you have demonstrated these attributes in your work, education or other experience. It will assist your application if you explain the situation, what you did and what the outcomes were.

Attribute	Level
Valuing Diversity	A
Achieving Results	B
Communication	B
Innovation and Change	B
Negotiating and Influencing	B
People Development	B
Relationship Building	B
Strategic Focus	C

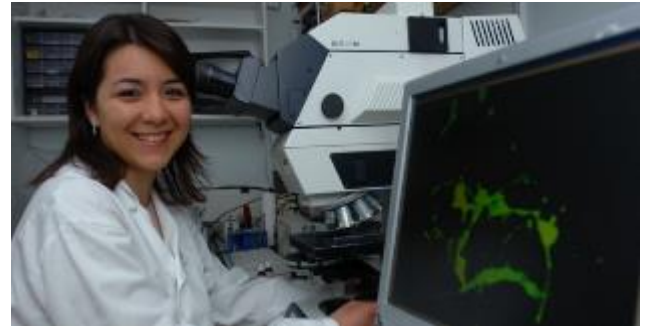
Department of Medicine

The Department of Medicine is one of the largest of the departments in the School of Clinical Medicine and contains 12 divisions with broad interests that are of relevance to human disease. Our work extends from basic biomedical research through to the clinic, and is intimately linked to other scientists throughout the Cambridge Biomedical Campus, the UK and the wider internationally community.

The Department is located over 5 floors of Addenbrooke's Hospital, the MRC Laboratory of Molecular Biology, the Addenbrooke's Centre for Clinical Investigation, and the Cambridge Institute for Therapeutic Immunology and Infectious Disease (CITIID) within the Jeffrey Cheah Biomedical Centre. Members of the Department also have research groups in the Cambridge Institute of Medical Research, CRUK Cambridge Institute, and the Institute of Metabolic Sciences.



Research is the major focus of the Department, spanning fundamental aspects of biology through work on disease mechanisms to clinical translation, and the Department currently hold research grants totalling in excess of £140M with an annual turnover of £29M. In addition the Department plays a major role in contributing to patient care at Addenbrooke's and Papworth hospitals. It provides direct medical input into eighteen different speciality areas, with two-thirds of Principal Investigators being clinically active.



A number of NHS employees with active research interests are also hosted within the Department, where they hold Associate PI status.

The Department is also heavily involved in clinical student education and runs successful MPhil and PhD programmes. It therefore makes a major contribution to service delivery and education as part of Cambridge University Health Partners, and this integration is critical to its focus on improving healthcare throughout the UK and abroad.



Professor Ken Smith, Head of Department

School of Clinical Medicine

Doing great work in a great place to work

About the School

The School of Clinical Medicine currently employs nearly 3,000 people, spanning all varieties of staff type from Academic Professors to administrative support.

In 1976 in response to the recommendation of the Royal Commission on Medical Education in the late 1960's, a complete medical course was re-established in Cambridge with the opening of the School of Clinical Medicine at the new Addenbrooke's Hospital site.

On 21st November 1980, HRH The Duke of Edinburgh, the Chancellor of the University of Cambridge, officially opened the Clinical School Building which presently accommodates the medical library, lecture theatres and seminar rooms.

The University of Cambridge School of Clinical Medicine aspires to change the practice of medicine and improve biological understanding in a wide range of clinical specialties and scientific disciplines. Collaborative research, both within biomedicine and crossing the boundaries to the mathematical, physical and social sciences, is key to our approach. The School also supports key enabling technologies and facilities in imaging, bioinformatics and biological systems. The main areas of research interest are:

- Cancer research
- Cardio-Respiratory Medicine
- Cellular mechanisms of disease
- Diabetes, Endocrinology and Metabolism
- Epidemiology, Public Health and Primary Care
- Genetics and Genetic Medicine
- Haematological and Transplantation Medicine
- Infection and Immunity
- Neurosciences and Mental Health
- Stems Cells and Regenerative Medicine.



Professor Patrick Maxwell, Regius Professor of Physic and Head of the School of Clinical Medicine

The School aims to provide leadership in education, discovery and healthcare. It will achieve this through; inspirational teaching and training, outstanding basic and clinical research and integration of these to improve medical practice for both individual patients and the population.

The School will:

Through inspirational teaching and training, educate individuals who:

- will become exceptional doctors or biomedical scientists
- combine a depth of scientific understanding with outstanding clinical and communication skills demonstrate a caring, compassionate and professional approach to patients and the public and
- are equipped to become future international leaders of their profession.

Through its commitment to the pursuit of excellence, support scientists of international standing in basic and clinical research aiming to:

- understand fundamental biology and thereby the mechanisms underlying disease integrate basic and clinical research
- apply a rigorous mechanism-based approach to clinical problems and
- innovate to solve the health challenges of our society.

Terms of Appointment

Tenure and probation

This is a fixed term appointment for a maximum of 4 years or until you obtain CCT (subject to any extension that you apply for and be granted by NIHR), which can be for a maximum of 24 months). This appointment is subject to the satisfactory completion of a 12-month probationary period.

This is an integrated appointment between the University and the relevant NHS Trust/Body ("NHS Trust"). You will therefore also be issued with an Honorary Clinical Contract by the NHS Trust. You should be aware that if your contract with the NHS Trust is terminated your employment with the University will be terminated, and vice versa.

You will require GMC registration, License to Practice and Medical Defence Cover for the duration of your appointment.

Working Pattern

The appointment is full-time.

Pension

You will automatically be enrolled to become a member of USS (Universities Superannuation Scheme) – a defined benefits pension scheme. If you are already a member of the NHS Pension scheme, you may be eligible to continue in the scheme and should contact the Pensions section of the University: www.pensions.admin.cam.ac.uk/

Annual leave

Subject to compliance with the Statutes and Ordinances relating to leave, full time officers are entitled in any holiday year to take a minimum of 28 days annual paid holiday. These periods are inclusive of public holidays that fall outside Full Term.

Sabbatical leave

Cambridge is generous in having statutory provision for leave of absence of one term for every six terms of service. Academic staff use this opportunity for study and research.

College membership

Membership of a College adds an important social

and many of the University's academic community find attractive. Appointment to a College fellowship is a separate matter from a University appointment. Most colleges expect their fellows to take part in undergraduate supervision and College administration, for which the College provides modest remuneration additional to University salary.

Many academic staff will be invited to join a College as a teaching fellow, but it is not compulsory for academic staff to be a member of a College. The Head of Institution or senior colleagues can offer more advice.

General information

Pre-employment checks

Right to work in the UK - we have a legal responsibility to ensure that you have the right to work in the UK before you can start working for us. If you do not have the right to work in the UK already, any offer of employment we make will be conditional upon you gaining it.

Screening Checks

The nature of this role means that the successful candidate will also need to undergo a health assessment.

Health declaration - once an offer of employment has been made the successful candidate will be required to complete a work health declaration form.

References - offers of appointment will be subject to the receipt of satisfactory references.

Qualifications - the person specification for this position lists qualifications that are essential and/or desirable. Please note that if you are offered the post you will be asked to provide your relevant original certificates of these qualifications.

Equality and Diversity

We particularly encourage women and /or candidates from a Black, Asian and Minority Ethnic background to apply for this vacancy as they are currently under-represented at this level within our University. **(Please see relevant guidance before**

inclusion:

<https://www.hr.admin.cam.ac.uk/recruitment/equality-law-and-recruitment/exceptions-equality-law/positive-action>)

Information if you have a disability

The University welcomes applications from individuals with disabilities. We are committed to ensuring fair treatment throughout the recruitment process. We will make adjustments to enable applicants to compete to the best of their ability wherever it is reasonable to do so and, if successful, to assist them during their employment. Information for disabled applicants is available at

<http://www.admin.cam.ac.uk/offices/hr/staff/disabled/>

We encourage you to declare any disability that you may have, and any reasonable adjustments that you may require, in the section provided for this purpose in the application form. This will enable us to accommodate your needs throughout the process as required. However, applicants and employees may declare a disability at any time.

If you prefer to discuss any special arrangements connected with a disability, please contact, the Department Administrator, who is responsible for recruitment to this position. Alternatively, you may contact the Clinical School Recruitment Team who are responsible for recruitment to this position via:

cshrstaffhub@admin.cam.ac.uk



The University

The University of Cambridge is one of the world's oldest and most successful universities. We are a renowned centre for research, education, and scholarship that makes a significant contribution to society. The University is consistently ranked amongst the top universities in the world. Our affiliates have won more Nobel Prizes than any other University.

Our sustained pursuit of academic excellence is built on a long history of first-class teaching and research within a distinctive collegiate system. For eight centuries our ideas and innovations have shaped the world. Our principal goal is to remain one of the world's leading universities in an increasingly competitive global higher education sector. Today the University of Cambridge is at the centre of a cluster of over 4,300 businesses employing 58,000 people.

Our capital investment projects include the West Cambridge site, the North West Cambridge development and the growth of the Biomedical Campus in the south of the city. The North West Cambridge development includes the opening of a primary school – the first in the UK to be managed by a University. So we are deeply embedded in, and committed to serving, our local community. These are all conspicuous signs of a University that is not only adapting to new needs, but also anticipating the future.

Our mission is to contribute to society through the pursuit of education, learning, and research at the highest international levels of excellence. Our core values are:

- freedom of thought and expression; and
- freedom from discrimination.



About Us

The University is one of the world's leading academic centres. It comprises 150 faculties and departments, together with a central administration and other institutions. Our institutions, museums and collections are a world-class resource for researchers, students and members of the public representing one of the country's highest concentrations of internationally important collections.

The University has an annual income of £2 billion. Research income, won competitively from the UK Research Councils, the European Union (EU), major charities and industry, exceeds £500 million per annum and continues to grow.

The Colleges and the University remain committed to admitting the best students regardless of their background and to investing considerable resources both in widening access and financial support. The 31 Colleges are self-governing, separate legal entities which appoint their own staff. Many academic staff are invited to join a College as a Teaching Fellow, which provides a further social and intellectual dimension. The Colleges admit students, provide student accommodation and deliver small group teaching.

The University awards degrees and its faculties and departments provide lectures and seminars for students and determine the syllabi for teaching and conducting research.

Our instinct for seeking out excellence and setting up enduring and mutually beneficial collaborations has led us to establish strategic partnerships across the globe. Whether it is the successful Cambridge-Africa Programme involving universities in Ghana, Uganda and elsewhere on the African continent; or the close association with the government of India to pursue new research in crop science; or the creation, with Germany's Max Planck Institutes, of a Cambridge-based centre for the study of ethics, human economy and social change – international partnerships are now an inextricable part of the University's make-up.

“Through its outstanding education, research and innovation, the University of Cambridge has made – and continues to make – a lasting contribution to human knowledge and is flourishing. By working at the University of Cambridge, you will be joining a vibrant community of students, scholars and professional services staff committed to supporting and enhancing the University's mission to contribute to society.”

Prof Deborah Prentice, Vice Chancellor 2023



Working at the University

Working at Cambridge you will join a diverse, talented and innovative community, with more than 18,000 students and over 16,000 staff from all walks of life and corners of the world.

The University continually explores strategies to attract and retain the best people. It is committed to supporting its staff to achieve their best. We are a fair, diverse and inclusive society and we believe our staff are our greatest asset. There is strong commitment to developing institutional leadership and supporting and encouraging staff development at all levels.

We offer a variety of roles including academic, research, professional, managerial and support roles. We also offer extensive benefits and excellent learning opportunities within a stimulating working environment.

The University's estate is undergoing the most significant transformation in its history. Cambridge has been able to create a new science and technology campus to the west of the city centre, and is now expanding further to the north west of Cambridge including investing in affordable homes for University key workers and community facilities. Even with our continued development, the University remains within walking or cycling distance across the campus. The University is a major partner on the Cambridge Biomedical Campus and we continue to redevelop our historic city centre sites demonstrating our determination to ensure that we can offer the best facilities and opportunities for our staff and students.



Equality & diversity

The University has built its excellence on the diversity of its staff and student community. We aim to be a leader in fostering equality and inclusion, and in promoting respect and a sense of belonging for all. We encourage applications from all sections of society. All appointments are made on the basis of merit. We have an Equal Opportunities Policy, along with a range of diversity networks for women, black and minority ethnic and lesbian, gay, bisexual and transgender staff. More details are available here: <http://www.equality.admin.cam.ac.uk/>

The University has a bronze Race Equality Charter aware, with framework for improving the representation, progression and success of minority ethnic staff and students within higher education. Furthermore, the University's Athena SWAN award recognises and celebrates good practice in recruiting, retaining and promoting women.

Living in Cambridge

Cambridge is rich in cultural diversity. From beautiful University and College buildings, museums and art galleries, quaint gardens and punts on the River Cam, to a vibrant restaurant and café scene, our employees are surrounded by the wonderful features of this unique city.

You can find a wide-range of high street shops and 3 shopping centres, with independent alternatives at the historic market and nestled within the passageways in the city centre. You will find a cinema, bowling alley, a nightclub and various live performances At the Cambridge Leisure Park, with further entertainment options at the Corn Exchange, Arts Theatre and the ADC Theatre. Further information can be found on the [Visit Cambridge](#) website.

If you prefer the faster pace of life, London is a 45 minute train journey away. For those travelling from overseas, Stansted Airport is just 45 minutes away and Heathrow Airport under 2 hours away. The University is a short distance from a host of other attractions such as Ely Cathedral, Newmarket Races and various wildlife parks and stately homes. Cambridge is also within easy reach of the beautiful Broads and coastlines of Norfolk and Suffolk.

Relocation Support

The University recognises the importance of helping individuals to move and settle into a new area. We provide support and guidance to those relocating internationally or domestically to take up a post at the University of Cambridge, liaising with other University offices and selected partners to ensure comprehensive relocation support is available. This includes: accommodation, childcare, schools, banking, immigration and transport. If you would like further information, please visit <https://www.accommodation.cam.ac.uk/>. The Shared Equity Scheme and the Reimbursement of Relocation Expenses Scheme provide financial assistance to qualifying new members of staff with the costs of relocating to Cambridge.

Accommodation Service

The University Accommodation Service helps staff, students and visiting scholars who are affiliated to the University in their search for suitable accommodation in Cambridge. The dedicated accommodation team can provide access to a wide range of University-owned furnished and unfurnished properties, and has a database of private sector accommodation available for short and long-term lets. For further information and to register with this free service please visit <https://www.accommodation.cam.ac.uk/>



What Cambridge can offer

We offer a comprehensive reward package to attract, motivate and retain high performing staff at all levels and in all areas of work.

The University offers a wide range of competitive benefits, from family leave entitlement, to shopping and travel discount schemes. Our generous annual leave package contributes to the positive wellbeing of our University employees. Sabbatical leave enables academics to focus on research and scholarship, whilst still maintaining their full salary. The University also has a [career break scheme for academic and academic-related staff](#), with additional flexible working policies for all other staff.



Pay and benefits

The University salary structure includes automatic service-related pay progression in many of its grades and an annual cost of living increase. In addition to this, employees are rewarded for outstanding contribution through a number of regular pay progression schemes. The University offers attractive pensions schemes for employees, with an additional benefit of a salary exchange arrangement providing tax and national insurance savings. Payroll giving is also a simple, tax-efficient way for employees to make monthly donations to charity.

CAMbens employee benefits

We offer a CAMbens scheme for University employees, providing access to online and in-store shopping discounts and cashback. With more than 2,000 participating retailers, employees can save money on a wide range of household expenses, from groceries and clothes, to holidays and insurance and much more. A range of local discounts are also available, helping employees to save money whilst also supporting local Cambridge businesses and a CAMbens Cycle to Work salary sacrifice scheme is also available, which enables employees to save money on transport costs. A 10% discount rate on the [purchase of train season tickets, bulk buy tickets](#) and an interest free travel to work loan are also available for staff of the University.



What Cambridge can offer

Family-friendly policies

The University recognises the importance of supporting its staff. We have a range of family-friendly policies to aid employees' work-life balance including a generous maternity, adoption and shared parental leave entitlement of 18 weeks full pay and emergency family care support via My Family Care.

Other family-friendly support includes:

Our highly regarded workplace nurseries, a childcare salary exchange scheme and a high quality holiday Playscheme may be available to help support University employees with caring responsibilities (subject to demand and qualifying criteria). Further childcare information can be found here:

<https://www.childcare.admin.cam.ac.uk/>

The Newcomers and Visiting Scholars Group is an organisation within the University run by volunteers whose aim is to help newly arrived wives, husbands, partners and families of Visiting Scholars and members of the University to settle in Cambridge and give them an opportunity to meet local people. The Office of Postdoctoral Affairs supports the postdoctoral community within Cambridge. Further details are available here: <https://www.opda.cam.ac.uk/>

Your wellbeing

The University's Sport Centre, Counselling Services and Occupational Health are just some of the support services available to University employees to promote their physical and mental wellbeing. There are many societies in Cambridge catering for almost every taste and interest. Whether you want to take part in a sport, participate in music or drama, pursue a hobby, or join a political group, you will almost certainly find that a society exists for this purpose. The University also hosts the [Cambridge Science Festival](#) and [Cambridge Festival of Ideas](#), as well as [Open Cambridge](#) weekend, which together attract over 50,000 visitors per year. The festivals are a great opportunity to get your first taste of public engagement, through volunteering, supporting hands-on activities or proposing a talk.

Development opportunities

We support new employees to settle in through various activities. The encouragement of career development for all staff is one of the University's values and we put this into practice through various services and initiatives. Our Personal and Professional Development Department provides development opportunities and courses for all University employees. These include face-to-face sessions, online learning modules and webinars. Employees may also apply for financial support to undertake training that will lead to a qualification. We offer reduced staff fees for University of Cambridge graduate courses and the opportunity to attend lectures and seminars held by University departments and institutions. Apprenticeship programmes are also available to support employees to develop their skills, experience and qualifications.



Clinical School Benefits

Cambridge Biomedical Campus

Being based on Cambridge Biomedical Campus gives the University of Cambridge School of Clinical Medicine employees an unrivalled range of on-site amenities.

These include:

Core amenities

- Marks & Spencer Simply Food
- Clothes & Gift shops
- The Body Shop
- Newsagent
- Barclays Bank
- Hairdressers
- Costa Coffee/Starbucks
- Various food outlets

Sports and Leisure

The Frank Lee Sports and Leisure Centre on the Campus is open to everyone who works on the Campus including employees of companies. The Centre offers a comprehensive range of activities for both adults and children (during the school holidays). Facilities include a 25m heated indoor pool, tennis and squash courts, cardio gym and fitness rooms. There is also a licensed bar, restaurant and function rooms.

Childcare

Bright Horizons Long Road nursery is located on the Campus making it an ideal location for parents who work at the site. The nursery is purpose built and houses five home bases, each designed specifically for babies, toddlers and pre-school children, as well as a spacious and secure external area in which children can play and explore the outdoors.

Apprenticeship opportunities

These are available for new and current members of staff to earn while they learn. The University is committed to nurturing talent and developing expertise through providing relevant vocational and professional apprenticeships across all of its departments and institutions.



Clinical School Wellbeing Programme

Following the launch of the Clinical School Wellbeing Programme in April 2014 it has continued to develop and grow each year. The School holds regular wellbeing talks and events in addition to hosting two dedicated Wellbeing Weeks packed with activities for staff each year. Activities include staff massages, smoothie bikes, step challenges, arts and crafts sessions and many more.

The School also has a team of Mental Health First Aiders recruited and trained from our own pool of staff. The School is always looking for new ways to engage staff and encourage them to look after their physical and mental wellbeing.



Equality, Diversity and Inclusion

The School of Clinical Medicine has a dedicated governance group overseeing equality, diversity and inclusion related activities. Regular talks are held throughout the year and all staff members are expected to undertake Equality and Diversity training.

The School has a number of networks for different staff groups encouraging communication and sharing of practices. There is also a growing network of 100+ Equality Champions who meet termly and help raise awareness of equality, diversity and inclusion within their departments. The School currently holds a silver Athena SWAN award utilising the process to critically analyse all areas of equality and diversity within the school.

How to apply

Applications should be submitted online via the University of Cambridge jobs page www.jobs.cam.ac.uk by clicking “Apply online” in the job advert. You will need an email address to register for our online system.

Conversations about flexible working are encouraged at the University of Cambridge. Please feel free to discuss flexibility prior to applying (using the contact information below) or at interview if your application is successful.

Informal enquiries are welcomed and should be directed to: **Dr Theodore Gouliouris, Academic Training Lead**

Email: theodore.gouliouris@nhs.net

If you have any queries regarding the application process, please contact csshrclinical@admin.cam.ac.uk

The closing date for applications is **Monday 14 April 2025**

The interview date for the role is to be confirmed.



UNIVERSITY OF
CAMBRIDGE